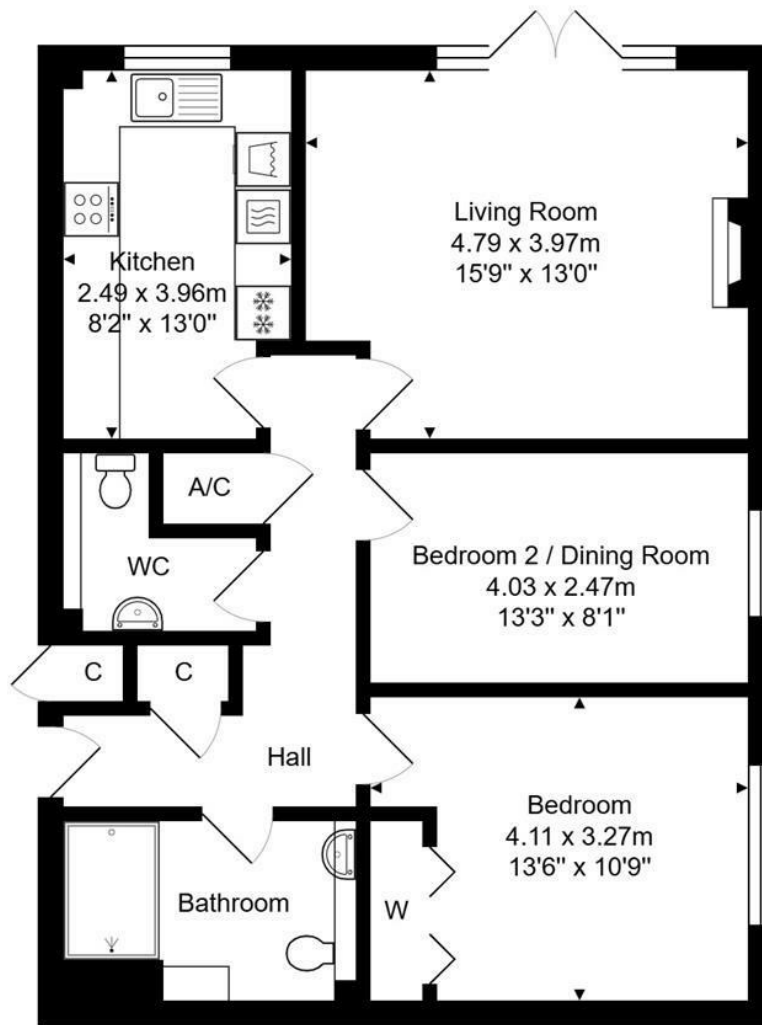




**19 Fitzmaurice Place
Bradford-On-Avon, BA15 1EL**

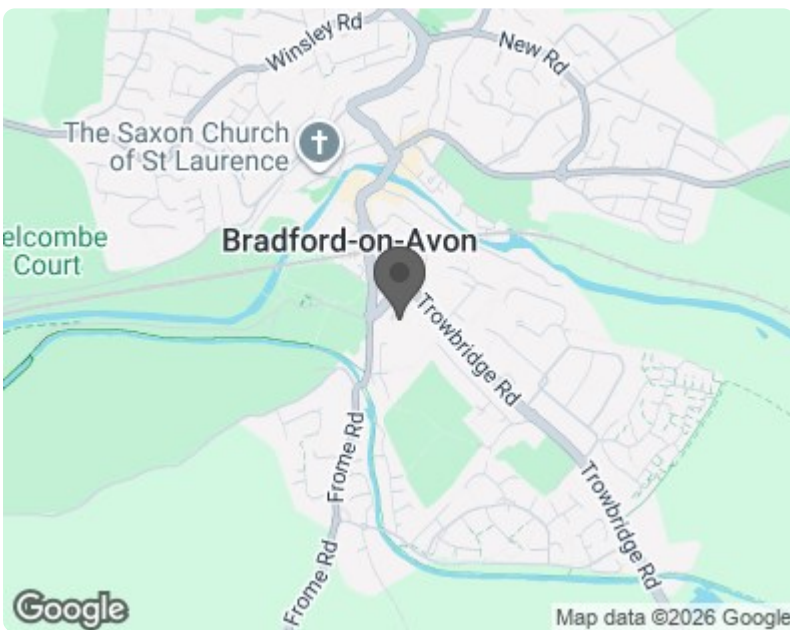
£175,000

AN IMPRESSIVE TWO BEDROOM, FIRST FLOOR RETIREMENT APARTMENT WITH JULIET BALCONY & A PLEASANT OUTLOOK IN THIS POPULAR RETIREMENT DEVELOPMENT. A SHORT WALK AWAY FROM THE TOWN CENTRE, AMENITIES & TRAIN STATION. NO ONWARD CHAIN.



Total Area: 74.4 m² ... 801 ft²

Whilst every attempt has been made to ensure the accuracy of the floorplan contained here, measurements of doors, windows, rooms and any other items are approximate and no responsibility is taken for any error, omission or mis-statement. This plan is purely for illustrative purposes only and should be used as such by any prospective purchaser. www.epcassessments.co.uk



| Energy Efficiency Rating | | Current | Potential |
|---|--------------------|-------------------------|-----------|
| Very energy efficient - lower running costs | (92 plus) A | | |
| (81-91) B | | | |
| (69-80) C | | | |
| (55-68) D | | | |
| (39-54) E | | | |
| (21-38) F | | | |
| (1-20) G | | | |
| Not energy efficient - higher running costs | | | |
| England & Wales | | 79 | 83 |
| | | EU Directive 2002/91/EC | |

| Environmental Impact (CO ₂) Rating | | Current | Potential |
|---|--------------------|-------------------------|-----------|
| Very environmentally friendly - lower CO ₂ emissions | (92 plus) A | | |
| (81-91) B | | | |
| (69-80) C | | | |
| (55-68) D | | | |
| (39-54) E | | | |
| (21-38) F | | | |
| (1-20) G | | | |
| Not environmentally friendly - higher CO ₂ emissions | | | |
| England & Wales | | | |
| | | EU Directive 2002/91/EC | |